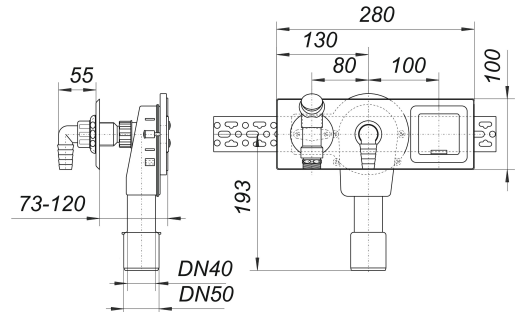
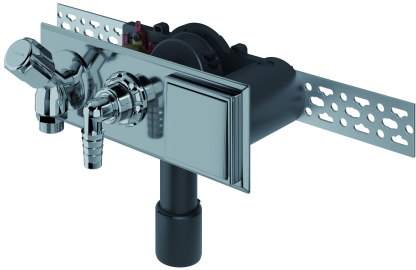


## washing machine or dishwasher trap type 406 E, DN 40/DN 50

Part number: 130617  
 GTIN: 4001636130617  
 Rebate group: 1



### Description:

washing machine or dishwasher trap type 406 E, DN 40/DN 50

#### SPECIFICATION

- compact recessed body
- backing plate
- fixing bracket
- cold water feed
- 1/2" on/off valve with back flow preventor and air-admittance valve
- inlet hose connector, chrome
- cover plate stainless steel 280 x 100 mm
- recess depth 73 - 120 mm
- spacer
- incorporating power socket with hinged cover

#### MATERIAL

polyethylene trap-body for welding HDPE

#### TESTED BY

DVGW (on/off valve), VDE (electrical connection)

If installed with only sound insulated contact against the building structure, the requirements of all classes of sound proofing confirming to DIN 4109.10, table 1 and 2 are fulfilled. Cover plates and on/off valves can be colour-coated to customers choice.