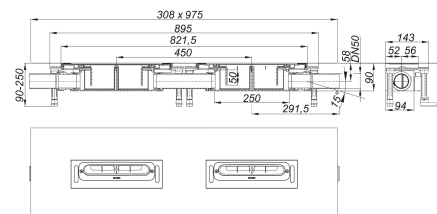
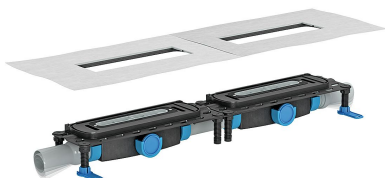


## drain body DallFlex Duo, DN 50

Part number: 536006

GTIN: 4001636536006

Rebate group: 11



### Description:

drain body DallFlex Duo, DN 50  
conforming to DIN EN 1253  
for installation with shower channels CeraWall Duo.

#### specification

- integrated anchors for extra grip in the screed
- flexible sealing collar for secure bonding of under-tile waterproofing
- accessories for sound insulated installation
- sound absorbing and height adjustable levelling legs
- removable trap insert, 50 mm water seal (conforming to DIN EN 1253)
- temporary blanking plate

#### material

polypropylene

Two outlets DN 50 horizontal, can be positioned on three sides without tools, with ball-joint, adjustable 0 – 15 degrees

Outlet polypropylene

### Flow rates tested to DIN EN 1253:

Nominal diameter	Product standard	Min. flow rate according to norm	Water level according to norm	Flow rate at water level 10 mm	Flow rate at water level 20 mm
DN 50	DIN EN 1253	0.80 l/s	20.00 mm	0.90 l/s	1.45 l/s

### Spare parts:

535504 trap insert DallFlex

537546 shower channel CeraFloor Individual bla